

CAST IRON OVER STEEL

# ALDERLEA T5

## ALDERLEA T5 CLASSIC

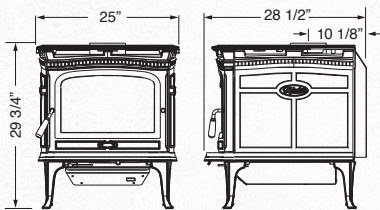
**FREESTANDING STOVE**  
FOR MEDIUM SPACES

Heat Output Cord Wood  
**72,000 BTU**

34,600 BTU EPA Test Fuel

EFFICIENCY (LHV)	80.7%
EMISSIONS	3.4 GM/HR.
LOG SIZE (MAX)	18 INCHES
FIREBOX SIZE	2.2 CU.FT.
GLASS SIZE	196 SQ.IN.
WEIGHT	490 LB.

With elegant, historic styling that adds to the decor of any room, the T5, and the T5 Classic in porcelain enamel, combine the best of cast iron and steel stoves for radiant and convective heat. With a concealed cooktop and a huge glass window for a clean view of the flame, the T5's are easy-to-light, easy-to-use, long-burning wood heaters with old world charm and unmatched durability.



ALDERLEA T5



ALDERLEA T5 CLASSIC

### STANDARD FEATURES

- Reliable, Durable Non-Catalytic Technology
- Floating Firebox for extended stove life
- Multi-port combustion air injection system
- Airwash Technology for clear, clean glass
- Swing out food warming shelves
- Easy cleaning ash system and chute
- Inside and outside combustion air capable
- Boost air for easy lighting
- Concealed cooktop fits 9" x 11" pan
- Fits close wall clearances without heat shields
- 304 Stainless Steel Baffle, insulation cover, rails and flame shield
- Mobile Home approved
- North-South loading

### PERFORMANCE OPTIONS

- 140 cfm Temperature-Actuated
- Variable-Speed Blower

### DESIGN OPTIONS

- T5: Metallic black cast iron finish
- T5 Classic: Majolica, Ebony, and Antique White porcelain enamel finish

Decorative door inset available for porcelain enamel models



 **CAST IRON OVER STEEL**

 **AIR WASH**  
A SYSTEM OF PUFFING TECHNOLOGY

 **BAFFLE SYSTEM**

 **FLOATING FIREBOX**

 **KNIFE EDGE DOOR**

 **SELF SEALING ASH DUMP**

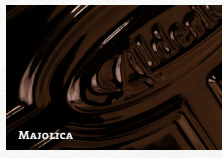
 **SINGLE LEVER**  
AIR CONTROL



METALLIC BLACK



EBONY



MAJOLICA



ANTIQUÉ WHITE

For reference only. Installations should be based on installation manuals. Specifications subject to change.